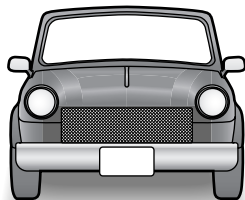


Panasonic®

Car Kit Operating Instructions



Before installation, read these instructions completely and check whether these items suit your car audio unit.

Accessories

- 1 Car power adaptor: SH-CDC12PEY
- 1 Car stereo cassette adaptor: SHCDM10B1PYK

Specifications

■ Car power adaptor

Input: DC 12/24 V

Output: DC 4.5 V (0.6 A)

Dimensions (W×H×D):

104×32×23 mm (4¹/₂"×1¹/₄"×2⁹/₃₂")

Cable length:

More than 1.5 m (4¹⁵/₁₆ feet)

■ Car stereo cassette adaptor

Frequency response: 30 to 20,000 Hz
(This is the rating for the head section of the product.)

Dimensions (W×H×D):

102.4×12.1×63.8 mm (4¹/₂"×1¹/₂"×2¹/₂")

Mass: 41 g (1.5 oz.)

Cable length: More than 1.4 m (4¹/₂ feet)

Note:

Specifications are subject to change without notice.

Mass and dimensions are approximate.

EB GN P PC PY (En)

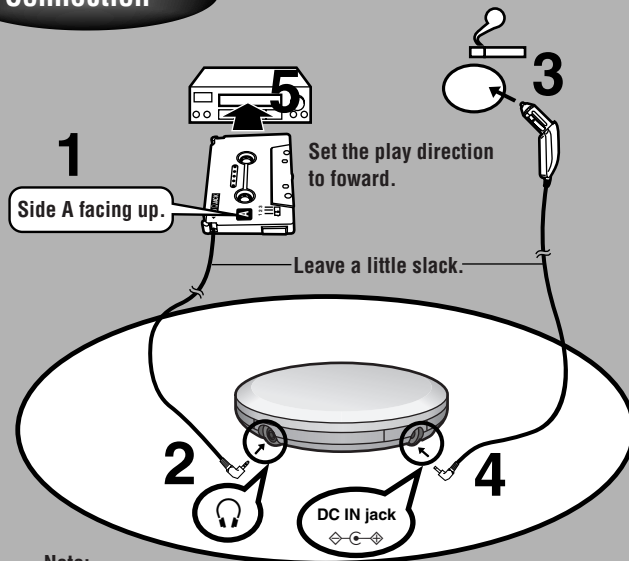
Panasonic Consumer Electronics Company,
Division of Panasonic Corporation of North America

One Panasonic Way Secaucus, New Jersey 07094 <http://www.panasonic.com>

Panasonic Puerto Rico, Inc.

Ave. 65 de Infantería, Km. 9.5 San Gabriel Industrial Park, Carolina, Puerto Rico 00985

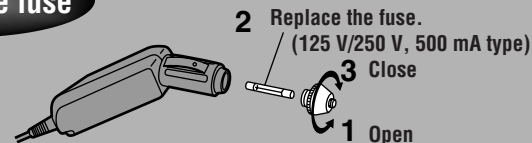
Connection



Note:

When connecting through a remote control (if included) in step 2, refer to the CD player's operating instructions.

Replace the fuse



Panasonic Canada Inc.

5770 Ambler Drive, Mississauga, Ontario L4W 2T3 www.panasonic.ca

Matsushita Electric Industrial Co., Ltd.

Web Site: <http://www.panasonic.co.jp/global/>

© 2003 Matsushita Electric Industrial Co., Ltd.

RQT6988-1P

F0103TR3114

Cautions

Ensure the CD player is installed correctly. Panasonic accepts no responsibility for the unit falling or other damage caused by faulty installation.

- Disconnect the adaptor when you are finished or leave the vehicle.
- Store so it is protected from dust.
- Do not expose to direct sunlight, heat, or air from a heater or cooler.
- Ensure the cord does not interfere with operation.

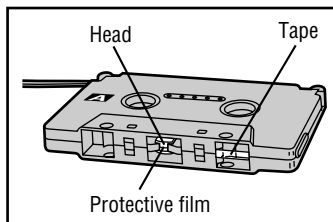
Heed the following cautions for each part.

■ Car power adaptor

- This car power adaptor can be used in an automobile which has a 12 V or 24 V battery. You can use it in a truck or other large vehicle. (This is a special-purpose negative ground car power adaptor.)
 - Do not connect immediately after using the cigarette lighter.
- For long periods of use
- Take the rechargeable batteries out of the CD player. (Leaving them in the CD player can reduce their service life.)
 - Take care that the car battery doesn't go flat.

■ Car stereo cassette adaptor

- Do not touch the head and tape.
- Do not remove the protective film on the head.
- Keep magnetic objects away from the head.



Troubleshooting guide

Before requesting service, make the below checks. If you are in doubt about some of the check points, or if the solutions indicated in the chart do not solve the problem: *In the U. S. A., contact the Panasonic Customer Call Center at 1-800-211-PANA (7262), or the Web Site <http://www.panasonic.com/consumersupport>, or the Web Site <http://www.panasonic.com/contactinfo>. In Canada, contact the Panasonic Canada Inc. Customer Care Centre at 905-624-5505, or visit the website (www.panasonic.ca), or an authorized Servicentre close to you. In other areas, consult your dealer for instructions.*

No sound.

When the temperature inside the vehicle falls to an extremely low level, the unit may not operate properly because the cord is too stiff and cannot be fit into it's proper position.

Volume is low.

- Refer to the CD player's operating instructions for adjusting the volume of the CD player.
- Adjust the volume on the car's audio system.
- If the car's audio system has a manual reverse function, set the play direction to forward.
- Adjust the L/R balance on the car's audio system.

Poor sound quality.

The tape deck heads on the car's audio system may be dirty: clean them.

The car stereo cassette adaptor doesn't fit in the car's audio system.

- Make sure you are trying to put it in the right way.
- The capstans in the car's audio system may be dirty: clean them.

The CD player doesn't come on.

- Replace the fuse.
- If the fuse blows frequently, consult your dealer.

There is a sound of something turning.

This is due to the construction of the adaptor and does not indicate a malfunction.

There is noise.

If you have connected the CD player to your car's audio system through a CD-IN or AUX IN jack, change the connection to the cassette adaptor that came with the CD player.

The car stereo cassette adaptor continues to operate even when the CD player is stopped.

Turn off the blank skip function on your car's audio system.